



NFP-3

Near-field Probe



DSA Series
Spectrum Analyzer
EMC Lab



HEADQUARTER

RIGOL TECHNOLOGIES, INC.
No.156,Cai He Village,
Sha He Town,
Chang Ping District, Beijing,
102206 P.R.China
Tel:+86-10-80706688
Fax:+86-10-80705070
Electronic Measurement
Instrument service and support
email:EMD_support@rigol.com

EUROPE

RIGOL TECHNOLOGIES GmbH
Lindbergh str. 4
82178 Puchheim
Germany
Tel: 0049- 89/89418950
Email: info-europe@rigoltech.com

NORTH AMERICA

RIGOL TECHNOLOGIES, USA INC.
10200 SW Allen Blvd, Suite C
Beaverton, OR 97005, USA
Toll-free: 877-4-RIGOL-1
Office: (440) 232-4488
Fax: (216)-754-8107
Email: info@rigol.com

JAPAN

RIGOL TECHNOLOGIES JAPAN G.K.
Tonematsu Bldg. 5F, 2-33-8 Nihonbashi-
Ningyocho, Chuo-ku,
Tokyo 103-0013
Japan
Tel: +81-3-6264-9251
Fax: +81-3-6264-9252
Email: info-japan@rigol.com

RIGOL® is the registered trademark of **RIGOL** Technologies, Inc. Product information in this document subject to update without notice. For the latest information about **RIGOL**'s products, applications and services, please contact local **RIGOL** office or access **RIGOL** official website: www.rigol.com



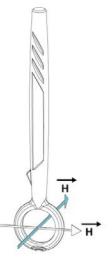
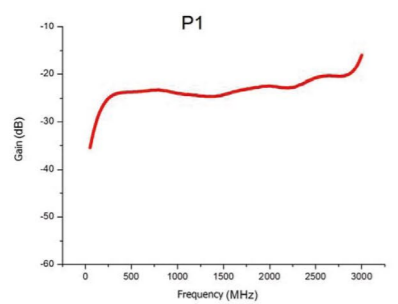

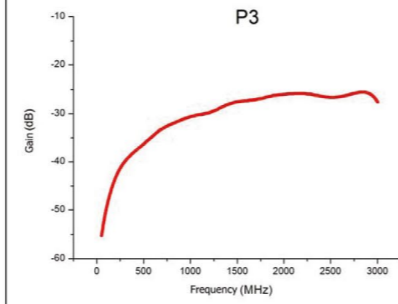
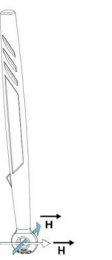
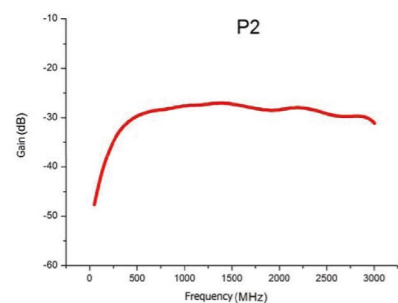

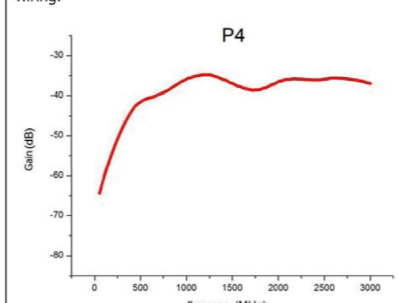
RIGOL TECHNOLOGIES, INC.

Advantages and Characteristics

- Frequency Range: 30MHz to 3GHz
- One set includes four types of probe, provides optimized sensitivity and resolution
- Minimum resolution: 2 mm; able to capture near-field radiation of single circuit line
- Applicable for electromagnetic leakage testing inside the cable
- A measurement tool for EMI pre-conformance testing, troubleshooting, and design verification
- Determine frequency and relative intensity of the spectral components of the interference source

Brief Technical Parameters

Frequency	
Frequency Range	30MHz to 3GHz
Terminal Type	
Terminal Type	SMB (M)
Adaptor	N (M)-BNC (F)
RF Cable	BNC (M)-SMB (F), 1000 mm
Terminal and Adaptor Impedance	50 Ω

Model	Description	Model	Description
NFP-3-P1	Near field probe for magnetic field measurements. The test range is within 10 cm. It is used to locate the leakage field.  	NFP-3-P3	Near field probe for magnetic field measurements. The resolution is about 5 mm. It is used to test the electromagnetic leakage of the cables.  
NFP-3-P2	Near field probe for magnetic field measurements. The test range is within 3 cm. It is used to accurately test the leakage field.  	NFP-3-P4	Near field probe for magnetic field measurements. The resolution is about 2 mm. It can test the magnetic field in the vertical direction and the electromagnetic field generated by the PCB wiring.  

Key Applications and Field

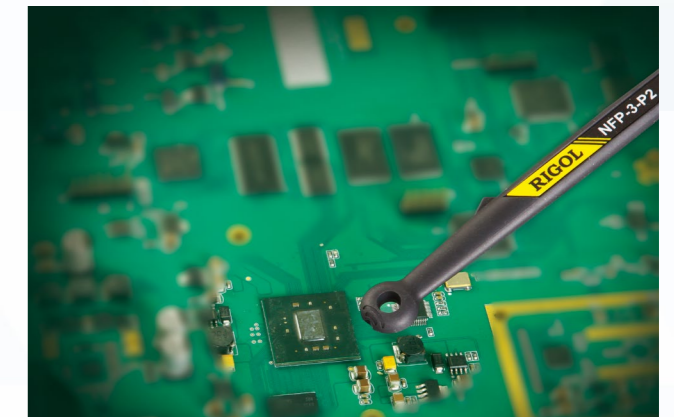
- Measurement requirements of SME production line for electromagnetic interference pre-testing
- Measurement evaluation requirements of electronic product design lab for electromagnetic interference signals
- Measurement requirements for electronics fans of electromagnetic interference
- Locate the source of the electromagnetic interference radiation
- Determine the frequency and relative intensity of spectral components of interference source
- Reduce the product development cycle, ensure product launch plan, and save the testing cost
- Applicable to RF industrial region, such as R&D, lower cost manufacture industry etc.
- Combined with the Microwave & RF education and training kit; applicable to RF education field; get to deeply understand the theories by practical operations

NFP-3 Application Scenarios

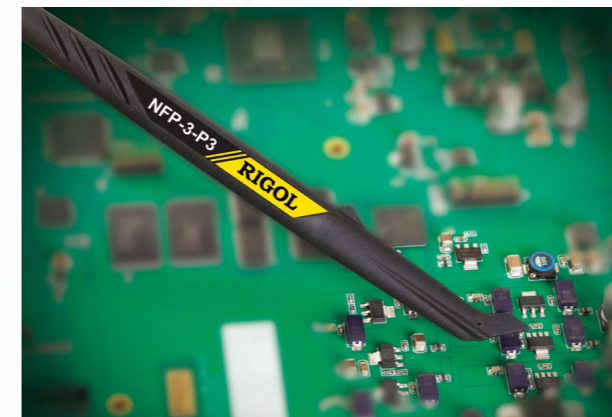
NFP-3-P1, a near-field probe which can detect the magnetic field within a range of 10 cm. It is applicable for the leakage detection of magnetic field. For example, verification of shielding measurement, leakage testing for the chassis etc.



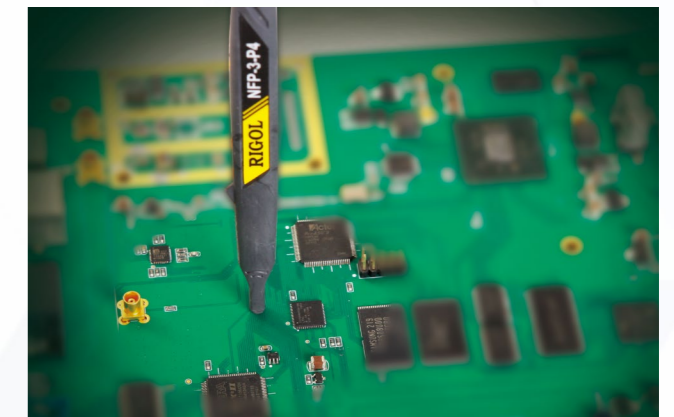
NFP-3-P2, a near-field probe which can detect the magnetic field within a range of 3 cm. It is applicable for detecting the magnetic environment around the modules. For example, accurately locating the leakage of the chassis, detecting the magnetic field direction and intensity of the circuit board module.



NFP-3-P3, a near-field probe which resolution is 5 mm. It is applicable for the detection magnetic field on surface. For example, the detection of the magnetic field produced by the wire, cable, metal surface, connectors, electronic components, and component joints.



NFP-3-P4, a near-field probe which resolution is 2 mm. It can detect the vertically emitted electromagnetic field. It is applicable for the detection of magnetic field where current loop exists. For example, electromagnetic field testing for PCB wiring, magnetic field testing for IC pins area etc



Price and Application Solutions

Please contact the RIGOL Regional Sales Manager for further information