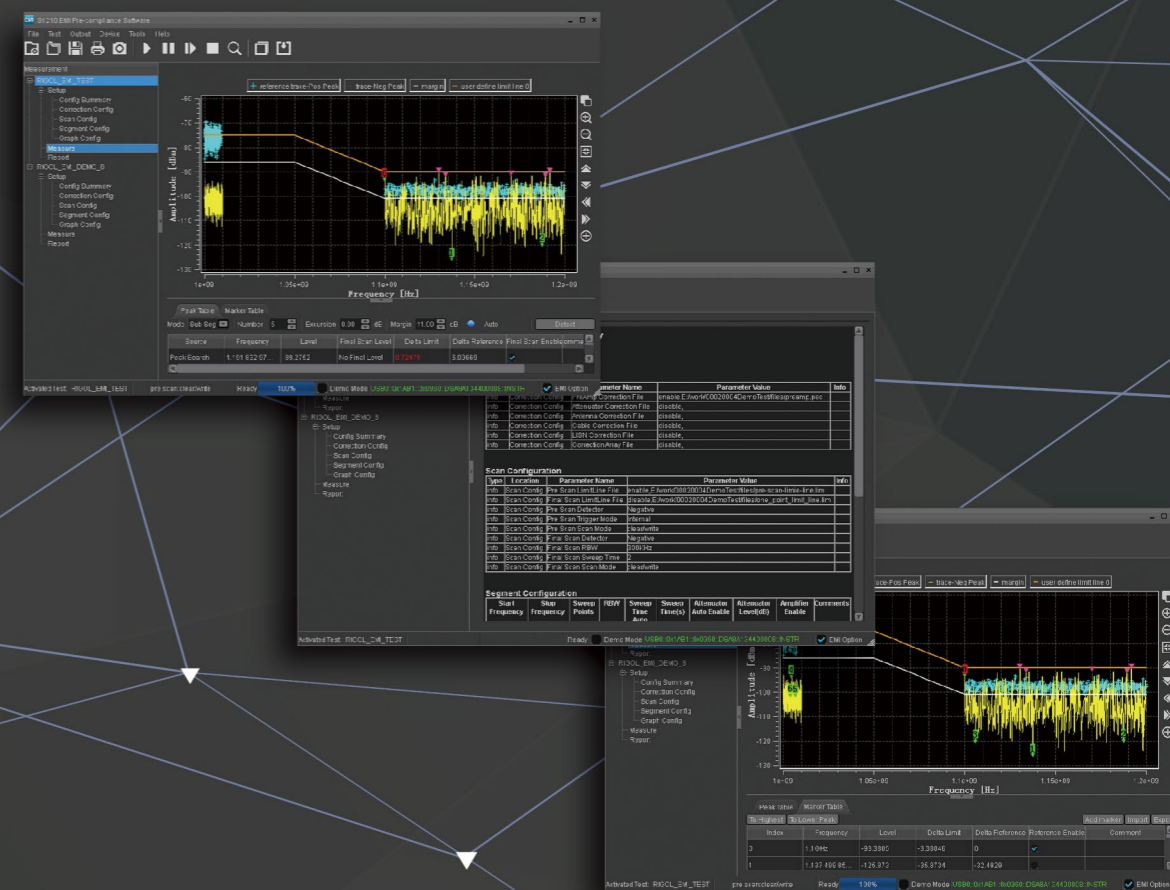


S1210 EMI

Pre-compliance Software



HEADQUARTER

RIGOL TECHNOLOGIES, INC.
No.156,Cai He Village,
Sha He Town,
Chang Ping District, Beijing,
102206 P.R.China
Tel:+86-10-80706688
Fax:+86-10-80705070
Electronic Measurement
Instrument service and support
email:EMD_support@rigol.com

EUROPE

RIGOL TECHNOLOGIES GmbH
Lindbergh str. 4
82178 Puchheim
Germany
Tel: 0049- 89/89418950
Email: info-europe@rigoltech.com

NORTH AMERICA

RIGOL TECHNOLOGIES, USA INC.
10200 SW Allen Blvd, Suite C
Beaverton, OR 97005, USA
Toll free: 877-4-RIGOL-1
Office: (440) 232-4488
Fax: (216)-754-8107
Email: info@rigol.com

JAPAN

RIGOL TECHNOLOGIES JAPAN G.K.
Tonematsu Bldg, 5F, 2-33-8 Nihonbashi-
Ningyocho, Chuo-ku,
Tokyo 103-0013
Japan
Tel: +81-3-6264-9251
Fax: +81-3-6264-9252
Email: info-japan@rigol.com

RIGOL® is the registered trademark of **RIGOL** Technologies, Inc. Product information in this document subject to update without notice. For the latest information about **RIGOL**'s products, applications and services, please contact local **RIGOL** office or access **RIGOL** official website: www.rigol.com



DSA800 Series
Spectrum Analyzer
EMC Lab

Advantages and Characteristics

- Introduce the workspace concept; manage multiple measurements
- Support the demo mode for you to enjoy a great user experience with the software, without connecting the instrument or obtaining a license
- Provide independent data manager function for you to edit required files for the software
- Support multiple languages (without restarting the software)
- Provide amplitude correction function for you to preview the correction setting and get the calibration results in a timely manner
- Provide pre-scan and final-scan function, support three scan modes: "Clear/Write", "Repeat Clear/Write", and "Repeat Max Hold"
- Provide the limit line function to quickly judge the measurement results
- Support segment scanning and editing for the table to accelerate the measurement speed
- Frequency axis supports the scale display in linear or log format
- Amplitude axis supports multiple amplitude units
- Provide comprehensive peak search settings for you to search for the desired peaks that meet with your search conditions
- Support importing and exporting the peak table
- Support editing the marker table, marking any frequency point that interest you
- Support setting the reference trace, easy for you to compare the measurement results
- Support easy operation on the spectral graph, convenient for you to analyze the results
- Provide report generation function

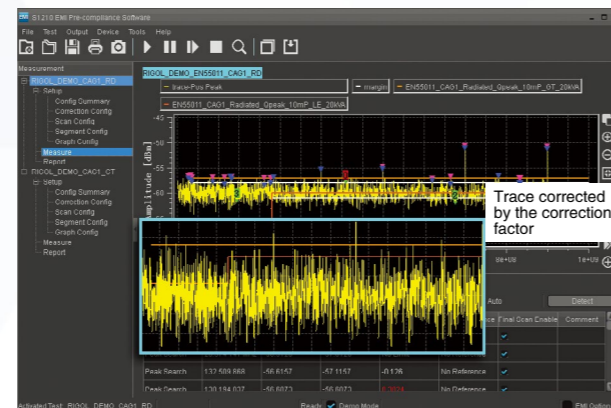
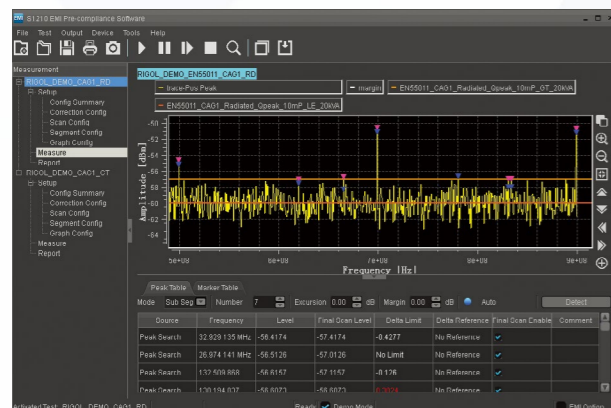
Advantages and Characteristics

- Measurement requirements of SME production line for electromagnetic interference pre-testing
- Measurement evaluation demands of electronic product design lab for electromagnetic interference signals
- Measurement requirements for electronics fans of electromagnetic interference
- Locate the source of the electromagnetic interference radiation
- Determine the frequency and relative intensity of the spectrum components of the interference source
- Applicable to the RF industrial field, such as R&D, lower cost manufacture industry etc.
- Combined with the Microwave & RF education and training kit; applicable to RF education field; get to deeply understand the theories through by practical operations

Advantages of S1210 EMI Pre-compatibility Testing Scheme

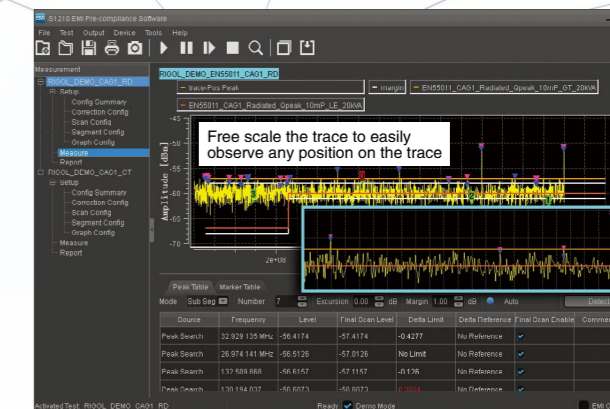
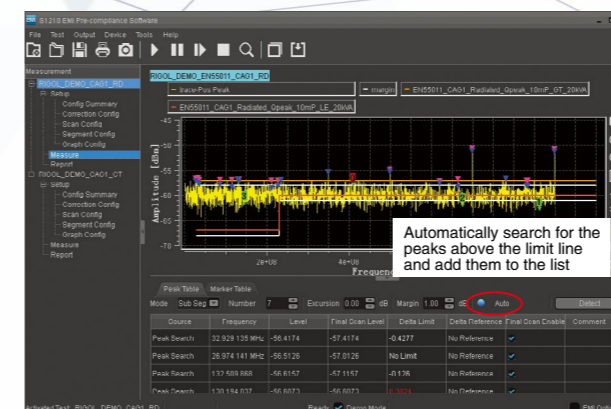
It is the most cost-effective EMI pre-compatibility testing tool. The built-in testing function of the tool can help engineers to quickly locate the problems of the products being measured, enabling the products to pass the testing conducted by EMC

You can automatically load correction factors (preamplifier, attenuator, antenna, cable, or correction array) to carry out amplitude correction for the results



It can automatically search for the peaks above the limit line and add them to the peak table.

You can adjust the scale of trace to accurately locate the signal to be observed.



Price and Application Solutions

Please contact the RIGOL Regional Sales Manager for further information

Ordering Information

	Description	Order Number
	EMI pre-compliance test software	S1210 EMI Pre-compliance Software
Model	spectrum analyzer, 100 kHz to 500 MHz (with preamplifier)	DSA705
	spectrum analyzer, 100 kHz to 1 GHz (with preamplifier)	DSA710
	spectrum analyzer, 9 kHz to 1.5 GHz (with preamplifier)	DSA815
	spectrum analyzer, 9 kHz to 3.2 GHz	DSA832
	spectrum analyzer, 9 kHz to 7.5 GHz	DSA875
	spectrum analyzer, 9 kHz to 3.2 GHz	DSA832E
	spectrum analyzer, 9 kHz to 1.5 GHz (with preamplifier, with tracking generator, factory installed)	DSA815-TG
	spectrum analyzer, 9 kHz to 3.2 GHz (with tracking generator, factory installed)	DSA832-TG
	spectrum analyzer, 9 kHz to 7.5 GHz (with tracking generator, factory installed)	DSA875-TG
	spectrum analyzer, 9 kHz to 3.2 GHz (with tracking generator, factory installed)	DSA832E-TG
	spectrum analyzer, 9 kHz to 3 GHz (with preamplifier)	DSA1030A
	spectrum analyzer, 9 kHz to 3 GHz	DSA1030
	spectrum analyzer, 9 kHz to 3 GHz (with preamplifier, with tracking generator, factory installed)	DSA1030A-TG
spectrum analyzer, 9 kHz to 3 GHz (with tracking generator, factory installed)	DSA1030-TG	
Option	EMI filter & quasi-peak detector	EMI-DSA800